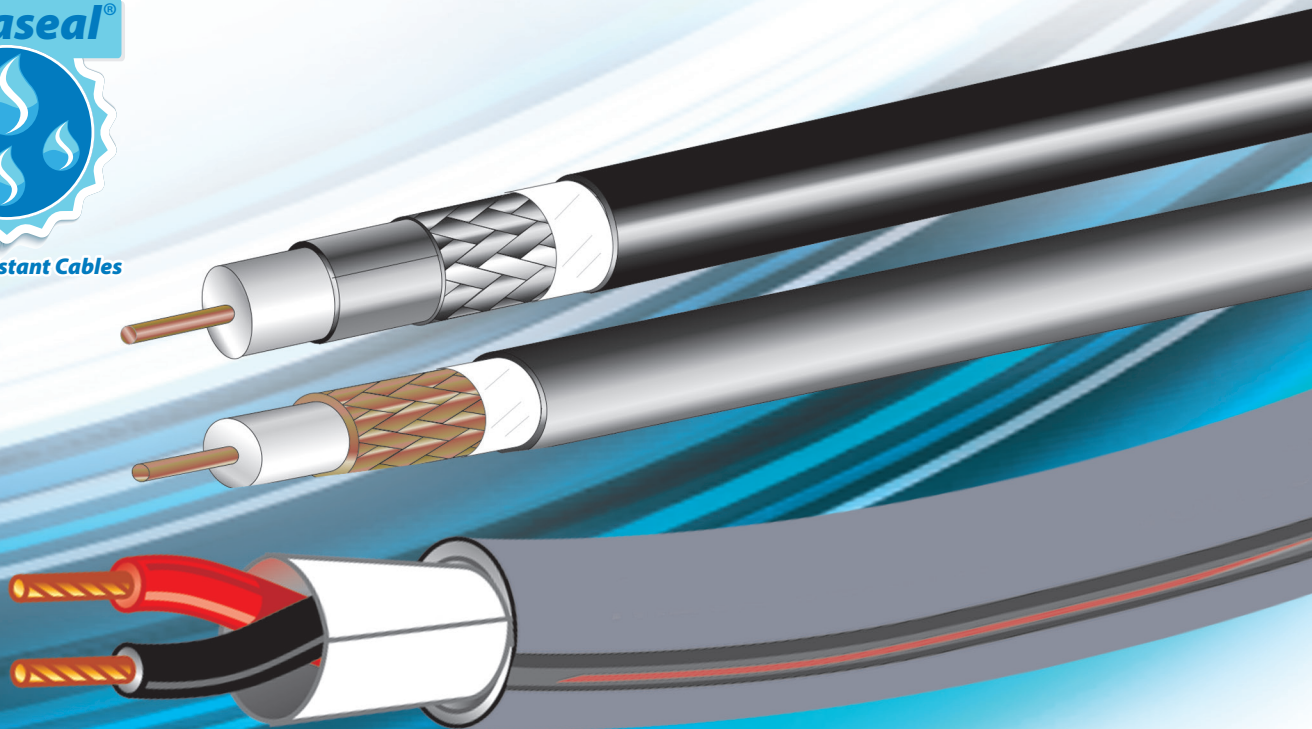
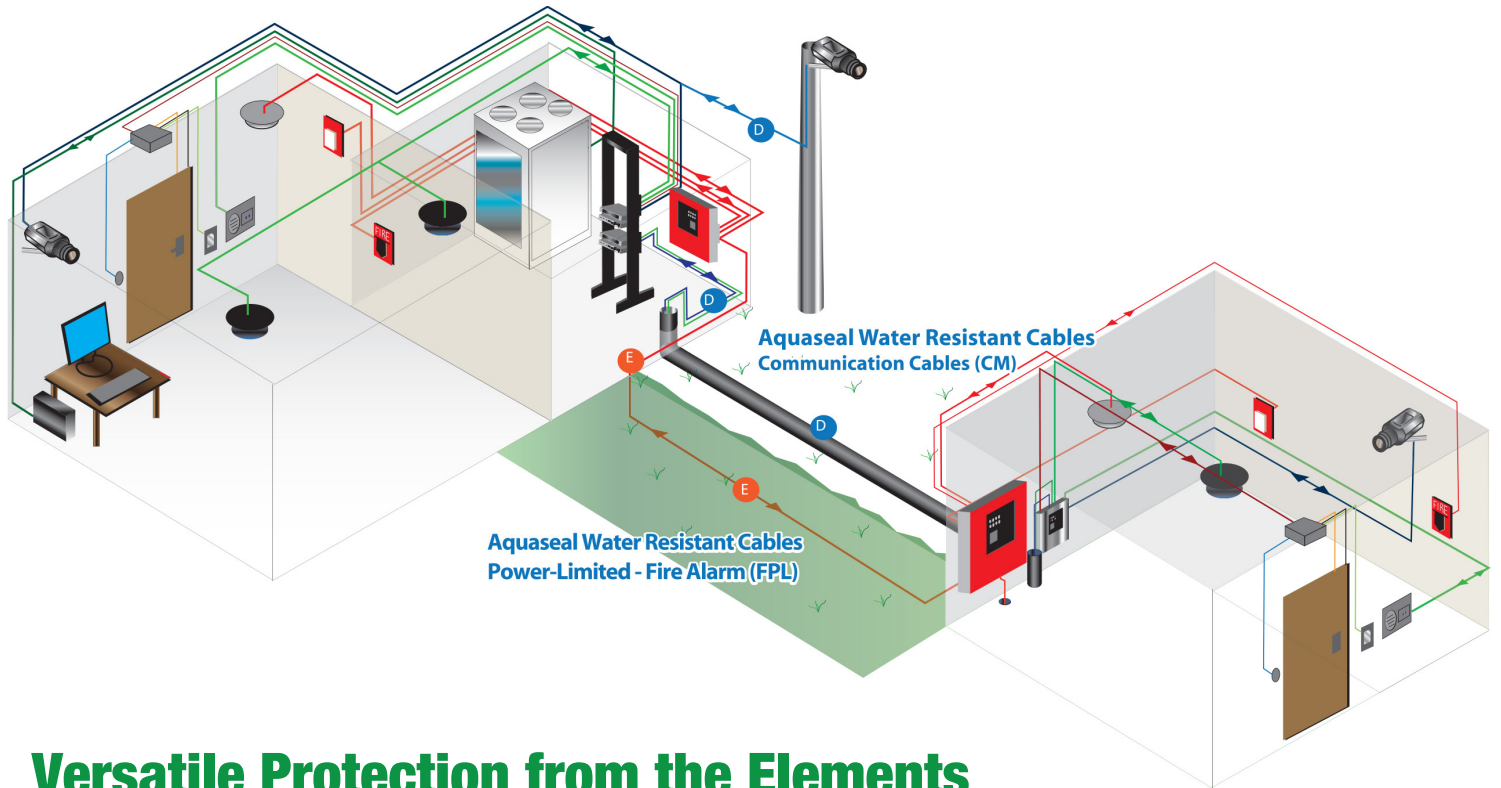


**Aquaseal<sup>®</sup> Water Resistant Cables**  
**Superior UL-Rated Cables for Outdoor**  
**In-Conduit & Direct Burial Applications**



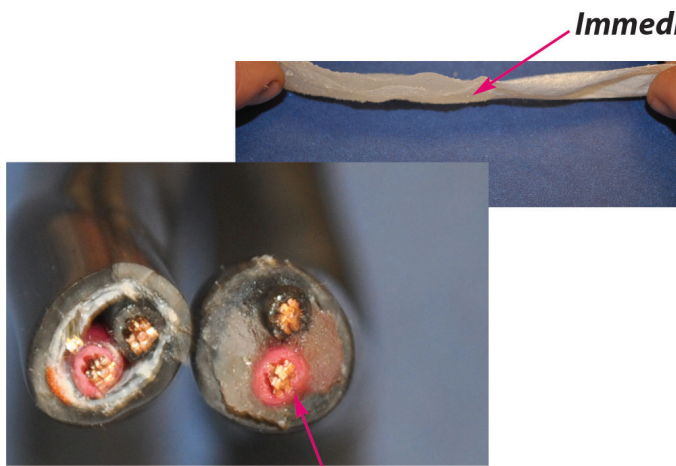
Access Control • Audio • Communications • Fire Alarm • Intercom • Video



## Versatile Protection from the Elements

Whether your application has low voltage cables running from one building to another in a wet location (direct-buried), or conduit running between locations in a single building (in-conduit), choose **Aquaseal**® Water Resistant Cables. Featuring water blocking tape and a jacket that resists sunlight and moisture, **Aquaseal** assures the integrity of your signals.

When specifying water resistant cables, there's no equal to **Aquaseal**.



*Immediate Swell*

*Immediate Swell*



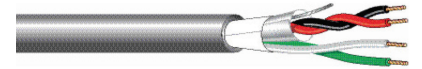
### Key Features & Benefits of Aquaseal

- > 2-Ply Tape for Exceptional Swell Height
- > 12mm Total Swell (10mm in 1st Minute)
- > Maximum Tape for More Protection
- > Super Absorbent Polymer (SAP) to Soak Up & Trap Water

# Specifications

Aquaseal water-resistant cables are available in more than 40 varieties to meet the specific requirements of direct-buried and in-conduit access control, audio, communications, fire alarm, intercom and video applications.

Intercom System - Indoor /Outdoor CM Rated- Wet Location	
AQC351	3 Cond. ( 2Shld, 1Unshld)- 22AWG Solid CM Rated Indoor/Outdoor Wet Location
AQC352	3 Cond. ( 2Shld, 1Unshld)- 22AWG 7x30 CM Rated Indoor/Outdoor Wet Location
AQC355	4 Cond. ( 2Shld, 2Unshld)- 22AWG Solid CM Rated Indoor/Outdoor Wet Location
AQC357	4 Cond. ( 2Shld, 2Unshld)- 22AWG 7x30 CM Rated Indoor/Outdoor Wet Location
AQC369	6 Cond. ( 2Shld, 4Unshld)- 22AWG 7x30 CM Rated Indoor/Outdoor Wet Location
AQC373	6 Cond. ( 1pr. Shld, 2pr Unshld)- 22AWG Solid CM Rated Indoor/Outdoor Wet Location
AQC359	4 Cond. ( 2Shld, 2Unshld)- 20AWG 7x28 CM Rated Indoor/Outdoor Wet Location
AQC358	3 Cond. ( 2Shld, 1Unshld)- 20AWG 7x28 CM Rated Indoor/Outdoor Wet Location



Audio - Line Level - Indoor /Outdoor - Wet Location	
AQC290	2 Cond. 22AWG Solid Shielded CM Rated Indoor/Outdoor Wet Location
AQC291	2 Cond. 22AWG 7x30 Shielded CM Rated Indoor/Outdoor Wet Location
AQC292	2 Cond. 20AWG 7x28 Shielded CM Rated Indoor/Outdoor Wet Location
AQC293	2 Cond. 18AWG 7x26 Shielded CM & FPL Rated Indoor/Outdoor Wet Location
AQC294	2 Cond. 16AWG 19x29 Shielded CM & FPL Rated Indoor/Outdoor Wet Location
AQC295	2 Cond. 14AWG 19x27 Shielded CL3 & FPL Rated Indoor/Outdoor Wet Location



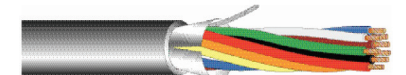
Multi-Pair Audio - Indoor /Outdoor CM Rated- Wet Location	
AQC430	2 Pair. 22AWG 7x30 Individually Shielded CM Rated Indoor/Outdoor Wet Location
AQC439	4 Pair. 22AWG 7x30 Individually Shielded CM Rated Indoor/Outdoor Wet Location
AQC432	6 Pair. 22AWG 7x30 Individually Shielded CM Rated Indoor/Outdoor Wet Location
AQC434	12 Pair. 22AWG 7x30 Individually Shielded CM Rated Indoor/Outdoor Wet Location
AQC422	6 Pair. 22AWG Solid Individually Shielded CM Rated Indoor/Outdoor Wet Location
AQC424	12 Pair. 22AWG Solid Individually Shielded CM Rated Indoor/Outdoor Wet Location



Speaker Systems & Fire Alarm - Indoor /Outdoor - Wet Location	
AQC224	2 Conductor 18AWG 7x26 Unshielded CM & FPL Rated Indoor/Outdoor Wet Location
AQC225	2 Conductor 16AWG 19x29 Unshielded CM & FPL Rated Indoor/Outdoor Wet Location
AQC226	2 Conductor 14AWG 19x27 Unshielded CM & FPL Rated Indoor/Outdoor Wet Location



Control & Communication - Indoor /Outdoor - Wet Location	
AQC188	8 Conductor 18AWG 7x26 Control Unshielded CM Rated Indoor/Outdoor Wet Location
AQC240	4 Conductor 22AWG Solid Communication Unshielded CM Rated Indoor/Outdoor Wet Location
AQC3274	15 Conductor 22AWG 7x30 Control Shielded CM Rated Indoor/Outdoor Wet Location
AQC3270	6 Conductor 22AWG 7x30 Control Shielded CM Rated Indoor/Outdoor Wet Location
AQC3186	6 Conductor 18AWG 7x26 Control Shielded CM Rated Indoor/Outdoor Wet Location
AQC3283	12 Conductor 18AWG 7x36 Control Shielded CM Rated Indoor/Outdoor Wet Location



## AQUASEAL | AQ Series - Direct Burial CL3& FPL Rated

AQUASEAL Water Resistant - Wet Location - Direct Burial - AQ Series Unshielded

Fire Alarm Systems - Indoor /Outdoor CL3 & FPL Rated- Wet Location	
AQ224	2 Conductor 18AWG 7x26 Unshielded CL3- FPL Rated Indoor/Outdoor DB Wet Location
AQ244	4 Conductor 18AWG 7x26 Unshielded CL3- FPL Rated Indoor/Outdoor DB Wet Location
AQ225	2 Conductor 16AWG 7x24 Unshielded CL3- FPL Rated Indoor/Outdoor DB Wet Location
AQ245	4 Conductor 16AWG 7x24 Unshielded CL3- FPL Rated Indoor/Outdoor DB Wet Location
AQ226	2 Conductor 14AWG 19x27 Unshielded CL3- FPL Rated Indoor/Outdoor DB Wet Location
AQ246	4 Conductor 14AWG 19x27 Unshielded CL3- FPL Rated Indoor/Outdoor DB Wet Location
AQ227	2 Conductor 12AWG 19x25 Unshielded CL3- FPL Rated Indoor/Outdoor DB Wet Location



AQUASEAL Water Resistant - Wet Location - Direct Burial - AQ Series Shielded

Fire Alarm Systems - Indoor /Outdoor CL3 & FPL Rated- Wet Location	
AQ293	2 Conductor 18AWG 7x26 Shielded CL3- FPL Rated Indoor/Outdoor DB Wet Location
AQ3244	4 Conductor 18AWG 7x26 Shielded CL3- FPL Rated Indoor/Outdoor DB Wet Location
AQ294	2 Conductor 16AWG 7x24 Shielded CL3- FPL Rated Indoor/Outdoor DB Wet Location
AQ3245	4 Conductor 16AWG 7x24 Shielded CL3- FPL Rated Indoor/Outdoor DB Wet Location
AQ295	2 Conductor 14AWG 19x 27 Shielded CL3- FPL Rated Indoor/Outdoor DB Wet Location
AQ296	2 Conductor 12AWG 19x 25 Shielded CL3- FPL Rated Indoor/Outdoor DB Wet Location



## Your Best Source for Water Resistant Cables & More

West Penn Wire designs and manufactures wires, cables, harnesses and related products for small, mid-size and Fortune 500 companies worldwide. Those products are used in audio, video, security and networking applications in these environments:

- > Corporate
- > Entertainment
- > Government
- > Healthcare
- > Higher Education
- > Hospitality
- > Houses of Worship
- > Retail

The company's engineering and manufacturing excellence enables customers to obtain solutions that meet the most demanding requirements for audio, video, security and networking applications.

To help meet customers' wire and cabling needs, WPW also offers value-added services, including:

- > Testing for Continuity & Workmanship
- > Custom Labeling (barcodes, logos, private labeling)
- > Special Packaging
- > Custom Kitting

With distribution centers located strategically throughout the country, WPW products can reach customers' places of business or jobsites quickly. WPW was established in 1971 and is based in Washington, PA, near Pittsburgh. It is part of the Belden group of companies (NYSE:BDC).



**AV, SECURITY & NETWORKING SOLUTIONS**

800.245.4964 | [sales@westpennwire.com](mailto:sales@westpennwire.com) | [www.westpennwire.com](http://www.westpennwire.com)